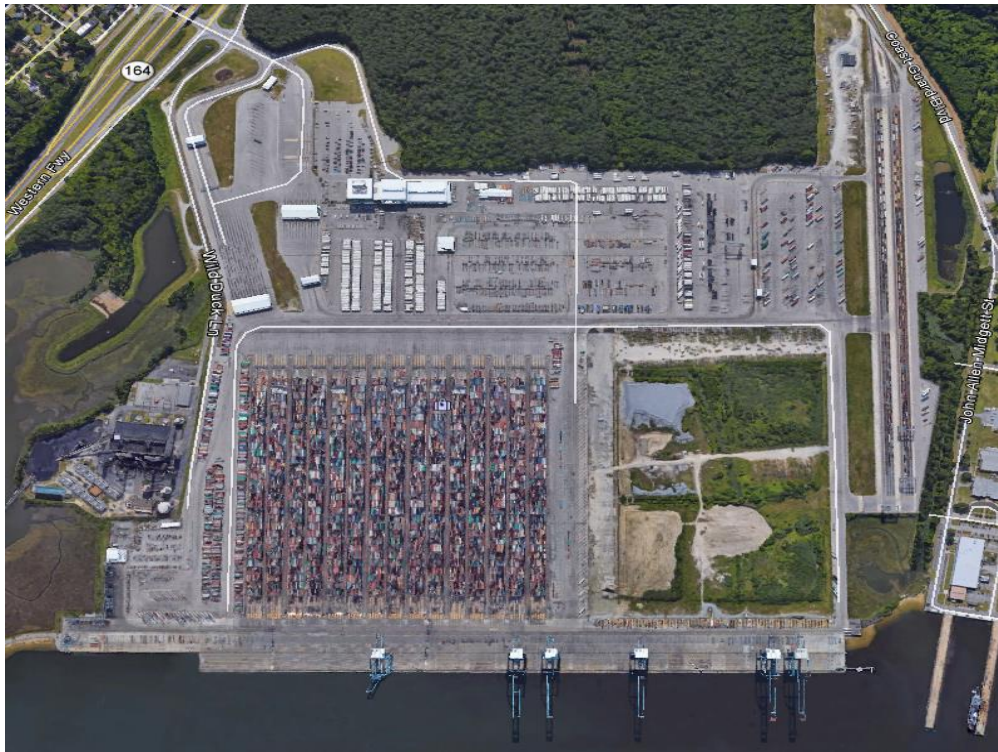


THE PORT OF VIRGINIA

ADDRESSING TODAY'S CHALLENGES - PREPARING FOR TOMORROW'S OPPORTUNITIES



Virginia International Gateway



- Total Acreage: 291
- Wharf: 3,200 ft.
- Depth: 55 ft.
- Cranes: 8 with 22 container wide outreach
- Container Stacks: 15
- Annual container capacity: 650,000

Rail service via Norfolk Southern and CSX

VIRGINIA INTERNATIONAL GATEWAY

\$320 million investment

Increases capacity to 1.2 million containers

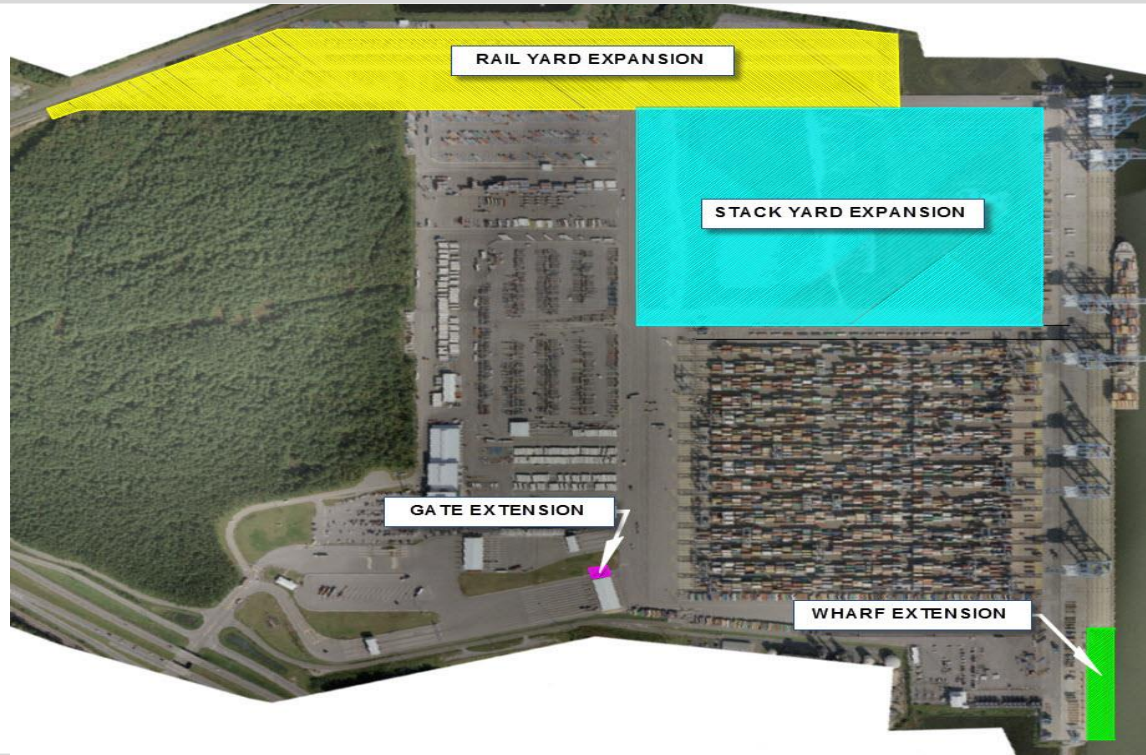
Expanded Rail and Stack Operation

Extended Berth

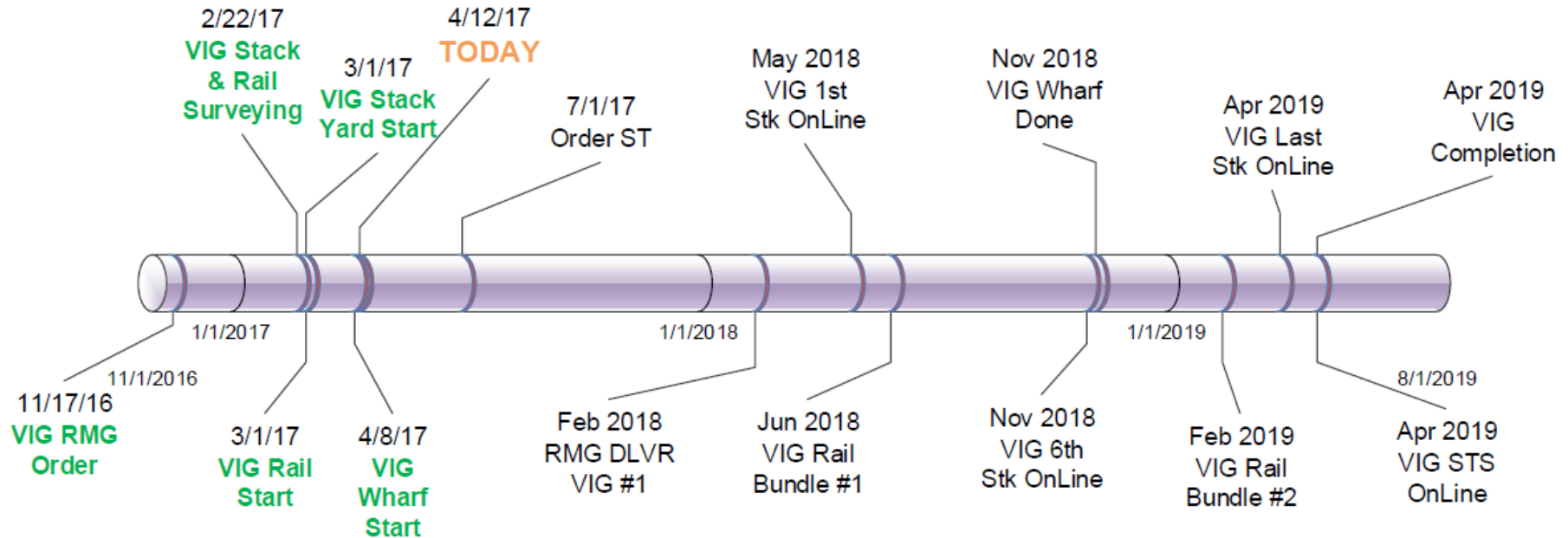


1,000,000 ADDITIONAL CONTAINERS ANNUALLY (A 40% INCREASE)

VIG II – Project Components

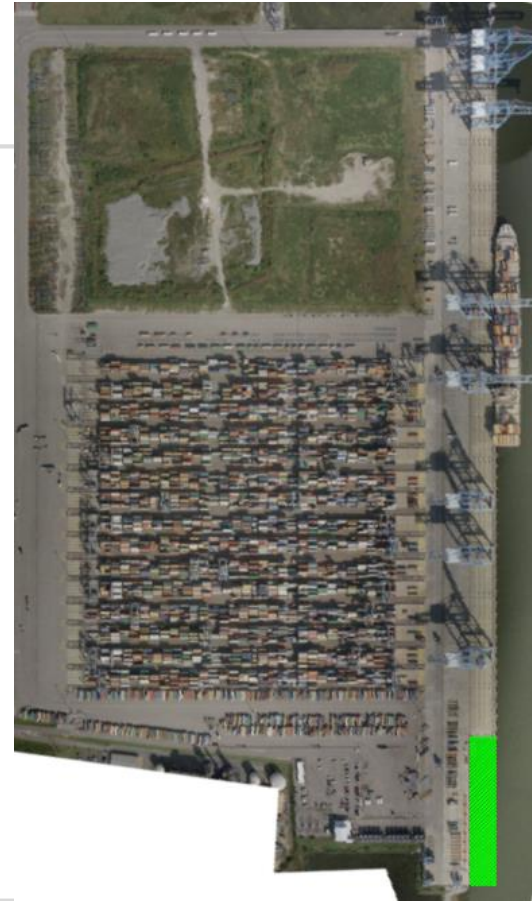


VIG Phase II TIMELINE



VIG II – Wharf Expansion

- Additional 650 feet of berth
- 3,750 feet at completion
- Four new STS cranes
- Work began April 8th











-0:00:05





-0:00:04





-0:00:03





-0:00:02





-0:00:01





0:00:00





0:00:07





0:00:07





0:00:07





0:00:07





0:00:08





0:00:08





0:00:08





0:00:08





0:00:09





0:00:09





0:00:10





0:00:15

































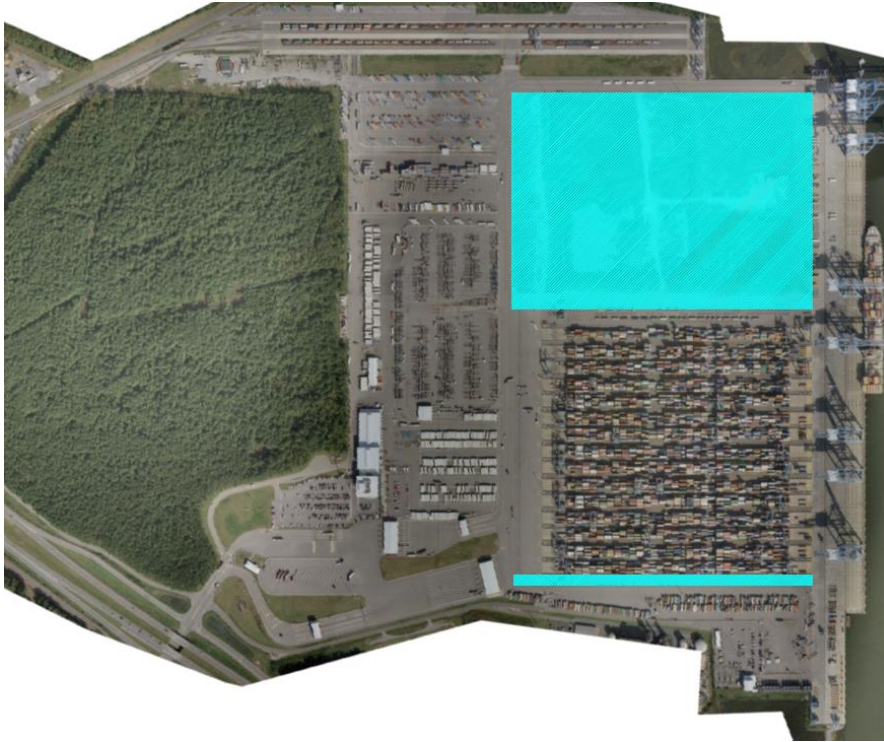
VIG II – Gate Expansion



- Four new Inbound Gate lanes
- 17 Inbound Gate lanes at completion
- No date set for start of work



VIG II – Stack Yard Expansion



- 13 new container stacks
- 26 new RMGs (Rail Mounted Gantry Cranes)
- 28 stacks at completion
- Work began March 1st
- First Stack online in May 2018
- Last Stack online in April 2019

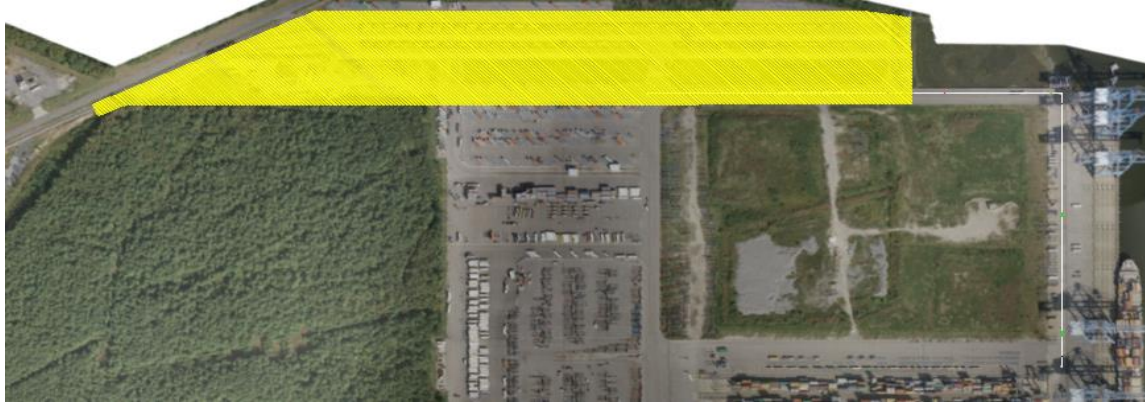




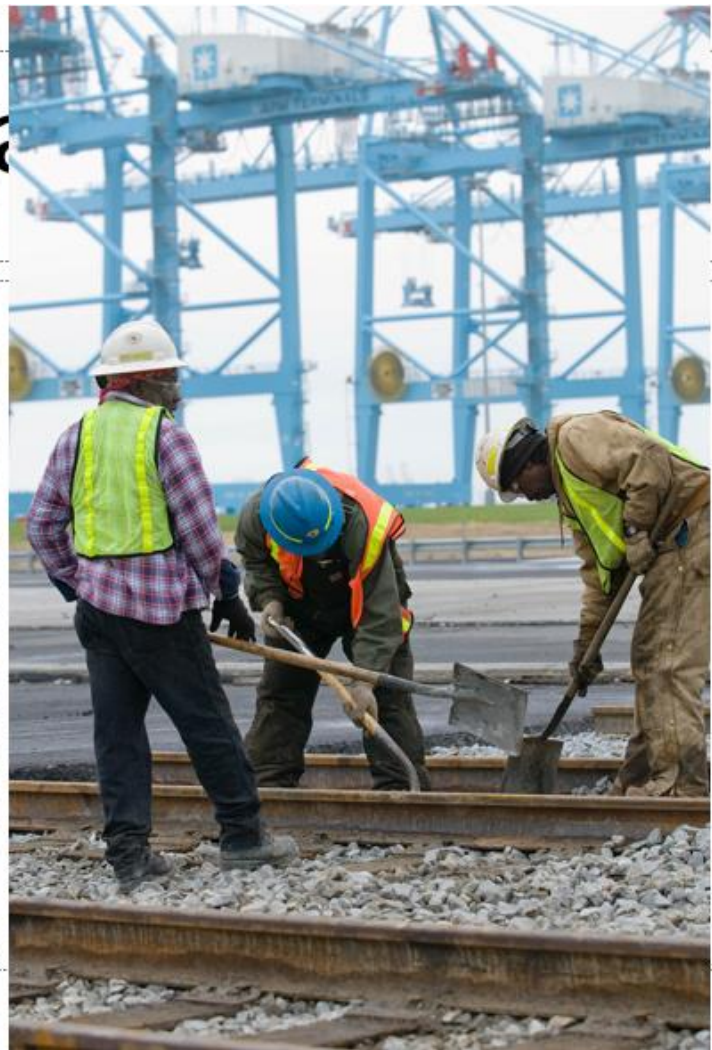




VIG II – Rail Yard Expansion



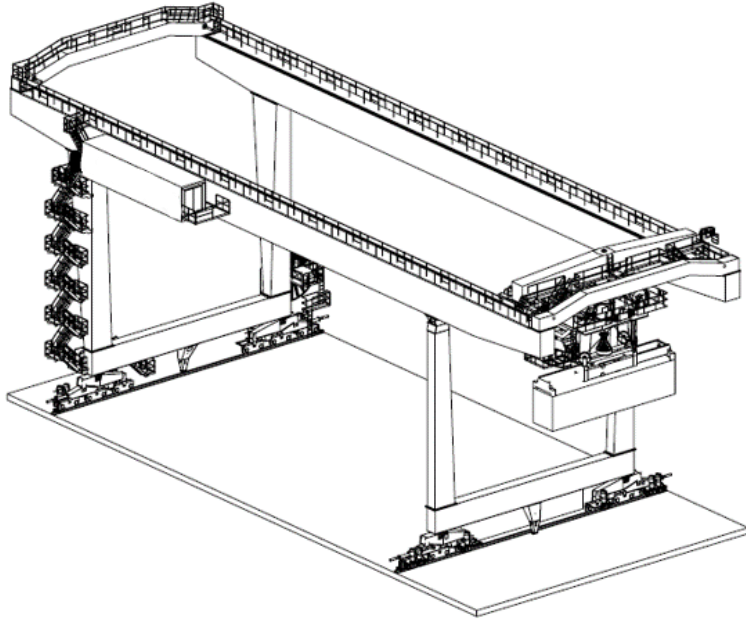
- 19,600 feet of track at completion (8 tracks)
- Four cantilever rail mounted gantry cranes (CRMGs)
- Work began March 1st





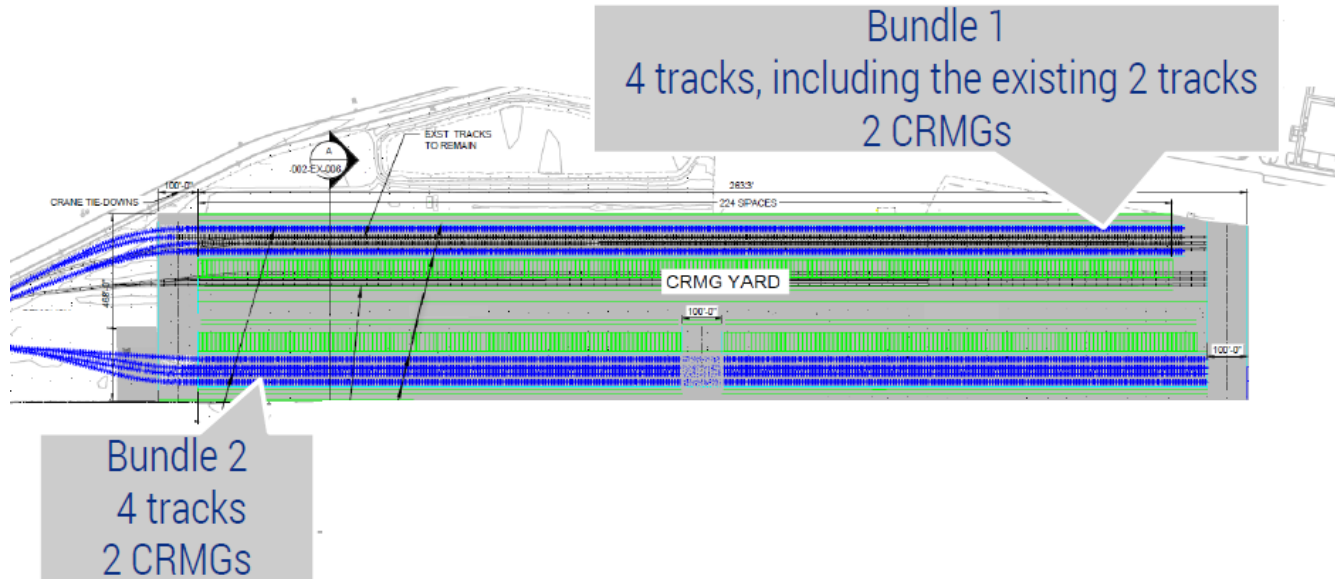


VIG Phase II – CRMG Cranes

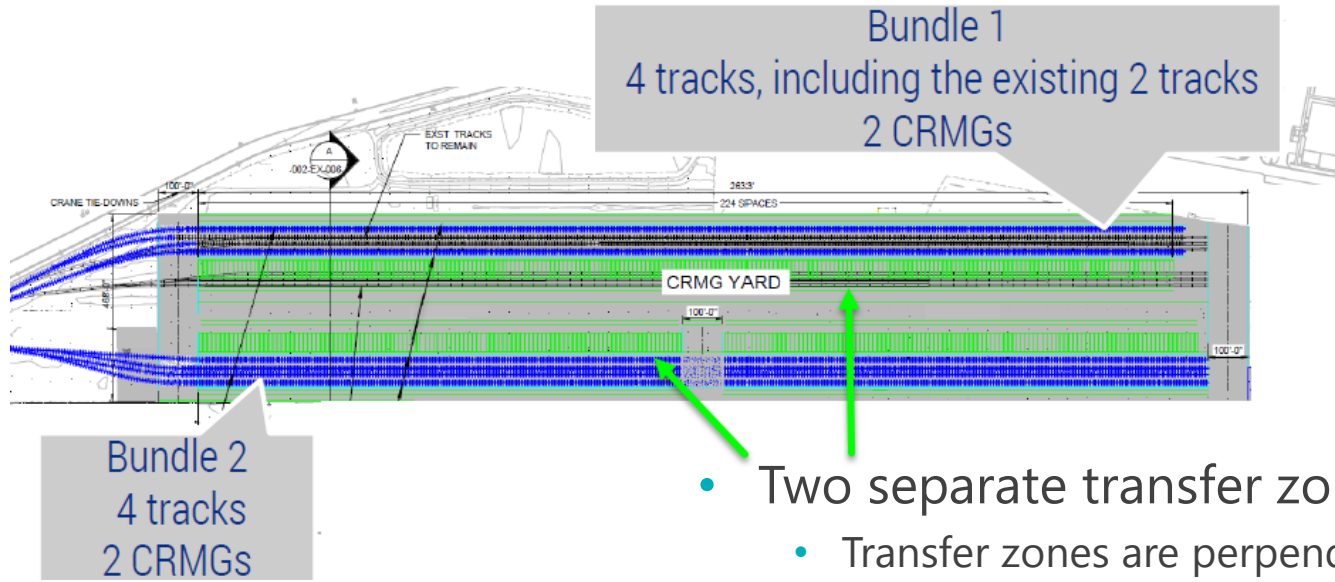


- CRMG cranes (Cantilever Rail Mounted Gantry)
- Two rail track bundles
 - Four rail tracks per bundle
- Two CRMG cranes over each rail track bundle
- Faster hoist motors vs standard CRMG model
- Increased gantry and trolley speeds with a smaller, lighter crane
- Greater operating separation between cranes for reduced interference

VIG II – Rail Yard Expansion



VIG II – Rail Yard Expansion



Project Communication

- Daily morning meetings with Project Team
- Weekly Status meetings with general contractors
- Weekly meetings with Operations
- Terminal Optimization Communications meeting
- Monthly Safety meeting with general contractors

Thank you